



The Neapolitan chord construction and Substitution

The Neapolitan chord Construction

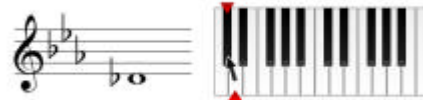
A **Neapolitan chord** is simply a major triad that is built on a special note. This note is the lowered second degree (the supertonic) of a major or minor scale.

1. Let's build the Neapolitan of C Minor.

First, figure out the second scale degree.
In C Minor, this is D.



Next, we will lower it to D-flat .



Now build a major triad. This results in D-flat -F-A-flat .



A D-flat major chord is the Neapolitan of C Minor.

2. Next, let's build the Neapolitan of E Minor.

Again, we need to figure out the second scale degree. In E Minor, this is F-sharp .



Lower it to F natural.



Now, build a major triad. This results in F-A-C.



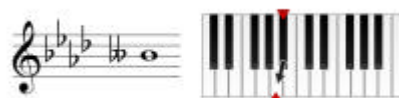
Thus, an F major chord is the Neapolitan of E Minor.

3. Next, let's build the Neapolitan of A-flat Major.

In this key, the second scale degree is B-flat .

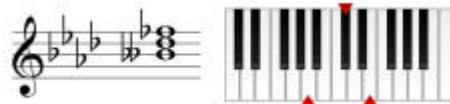


Lower it to B-double-flat .

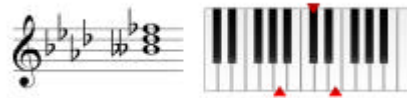


Now, build a major triad. This results in B-double-flat -D-flat -F-flat .

The Neapolitan chord construction and Substitution



Thus, a B-double-flat major chord is the Neapolitan of A-flat Major.



4. For our final example, let's build the Neapolitan of A Major.

In this key, the second scale degree is B.

Lower it to B-flat .



Now, build a major triad. This results in B-flat -D-F.



Thus, a B-flat major chord is the Neapolitan of A-flat Major.

The Neapolitan chord Substitution

